

# R.S. PRUSSIA

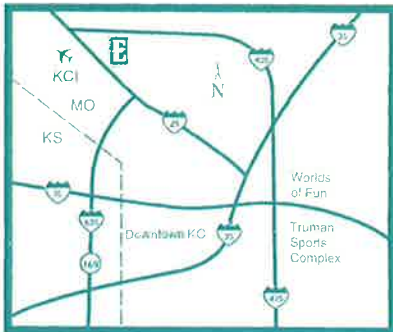
Issue Number 67

I.A.R.S.P.C. Inc.

February 2005



**EMBASSY SUITES  
HOTELS\***



For  
**RESERVATIONS**  
1-816-891-7788



## LOCATION

The Embassy Suites Kansas City International Airport is situated at the intersection of I-29 and Tiffany Springs Parkway. Located just minutes from Kansas City International Airport, the hotel is 15 minutes from Downtown Kansas City and close to Worlds of Fun, the Country Club Plaza and Truman Sports Complex, home of the Kansas City Chiefs and the Kansas City Royals.



**EMBASSY SUITES  
HOTELS\***

## RESERVATIONS

Call 1-816-891-7788, cut off date to make reservations at the International rate is July 8<sup>th</sup>. Room rates are \$102.00 per night plus taxes. Room rates include a free breakfast buffet or cooked to order breakfast.

The Heartland Club is proud to sponsor this year's Convention and will have Hosts and Hostesses in the main lobby to assist convention goers upon arrival.

The Hotel has free transportation from the Kansas City Airport which is just 5 miles from the Hotel.

Each room will have a sitting area plus a sleeping area. Pets are welcome with a deposit.

## In This Issue

Notes from the President  
George Kandel ..... 2

Notes from the  
Secretary & Treasurer  
Linn & Leslie Schultz ..... 3

From your Editor  
Linda Titus ..... 3

Do It Yourself Auction  
Howard Greenburg ..... 3

Letter to the editor  
Joyce Steinbuch ..... 4

Wanted  
Barbara Coultas ..... 4

What Makes the R.S. Prussia  
Club Great?  
Richard Habenicht ..... 5

Victorian Gowns  
Warren Parker ..... 6

The eBay Reporter  
Linn Schultz ..... 7

Heartland Website  
Leslie Schultz ..... 7

Code of Ethics  
..... 8-9

Woody Auction ..... 10-14

Prussia in the Web  
John Titus ..... 14-15

New Members  
..... 16

Regional Club News  
..... 16

Directions to Embassy Suites  
Hotel KCI ..... 16



Our Hotel Take a Tour of Our Hotel The Embassy Suites Hotel - KCI is conveniently located just 4 miles from the Kansas City International Airport and offers complimentary airport transportation daily. Each of the 236 beautifully appointed two-room suites surrounds an 8 story garden style atrium featuring two cascading waterfalls. Complimentary cooked-to-order breakfast is served daily along with a two hour manager's reception each evening. Work out in our 24 hour fitness center and relax in our indoor pool and hot tub. Over 14,600 sq. ft. of flexible, state of the art meeting/banquet space. Enjoy fine dining in a casual atmosphere in Tiffany Grille, or unwind with appetizers and cocktails in Fountain Court Lounge. Just one mile from Tiffany Greens Golf Course and just minutes from shopping and entertainment.

*The International Association  
of R.S. Prussia Collectors, Inc.*

*Visit Us At*

*<http://www.rsprussia.com>*

**President**

George Kandel, Indiana  
260-868-5263  
vinmark@fwi.com

**Vice President**

Terry Coy, Kentucky  
502-244-5391  
user258442@aol.com

**Secretary**

Leslie Schultz, Iowa  
563-678-2658  
lschultz@netins.net

**Treasurer**

Linn Schultz, Iowa  
563-678-2658  
lschultz@netins.net

**Past President**

Jenny Lou Huston, Texas  
210-494-2791  
phust@swbell.net

**Directors**

John Titus, Iowa  
563-785-4438  
imagesinink@iowatelecom.net

Marlene Howard, Ohio  
513-777-1074  
dhoward5@cinci.rr.com

Assid Corban, New Zealand  
64-9-838-8947  
orchids@xtra.co.nz

Wanda Faye Krick, Tennessee  
931-393-1015  
joekrick@charter.net

Grady Hite, North Carolina  
336-924-8657  
ahite@triad.rr.com

Richard Habenicht, Illinois  
815-838-8456  
reed1021@comcast.net

**Recording Secretary**

Theresa Newcomer, Pennsylvania  
717-653-5976  
chocset@aol.com

**Historian**

Mary Lou Bougher, Kentucky  
502-247-7155  
mlkbougher@msn.com

**Newsletter Editor**

Linda Titus, Iowa  
Phone 563-785-4438  
Fax 563-785-4673  
PO Box 983  
Durant, IA 52747-0983  
imagesinink@iowatelecom.net

**Web Page Editor**

Ken Jinde, Canada  
kenj89@rogers.com



## Notes from the President



*George Kandel*



Greetings from frigid Indiana. We have experienced a tough January. Unusual events occurred all around the world with the most unusual being the Tsunami in Asia. It is almost unbelievable the havoc it caused and the loss of life was catastrophic. Snow falls of over three foot and mud slides in California have all occurred and added to our misfortune. Certainly, we again are reminded that a greater power than mankind has caused this all to happen. On the positive side, we did have an election that was culminated without a recount. A holiday season has past and I trust you were all able to enjoy your families. A new year arrived which reminds us that convention time is not that far away.

January was a tough month for me. I'm told that I have had a bout with pneumonia, but I'm feeling much better now. I have been in contact with various individuals. The treasurer reports that financially we are in a stronger position this year than last and this should mean no additional increase in dues. The secretary reports the membership is nearly the same as this time last year with approximately 400 renewed. We can do better than this. Let's make an effort to get yours renewed. Make your reservations for the convention in Kansas City for July 28-30. Early arrivals are welcomed and the cost this year will be \$102.00 per night which includes breakfast. Mr. Riley informs me that a new tax may be in effect by July, but it is a minimal \$1. I believe this will be added to you charges on your final invoice.

The Heartland Club has worked diligently on making arrangements. All has been finalized with the exception

of the Saturday night banquet. This will be done at the Heartland March meeting which I plan to attend. The information will be in the next newsletter.

Terry Coy has obtained two pieces of Prussia to be raffled off. I believe they are trays; one similar to last year, and the other a beautiful floral. It is not an easy task to obtain them at a price that will allow the club to make a profit. Thank you Terry!

The auction committee reports the possibility that two or more may be presented to them, but as of yet none have been submitted for their consideration. The cut-off date is Feb.15th. This is becoming a paradox where the auctioneers do not want to submit theirs first. Something might leak out. This puts undue pressure on the committee who want to finalize it. Please give Joeleen Passow, Brad Witt and Marvin Heard your support and express confidence in their choice.

Linda Titus, membership committee chairperson states that volunteers who came forward at the convention failed to respond to her correspondence. We should not complain if we are unwilling to share ideas. I feel that this is our chance for improvement.

In summation, the 2005 Convention is shaping up as an exciting event. The Heartland Club is a group of ambitious people. Let's reward them by attending the convention. It's at a new site, a new city and the hotel is in an excellent location and is easily accessible.

*See you in KC.  
George Kandel*

PS: A good book to read is *The Purpose Driven Life* by Rick Warren.





## Notes from the Secretary and Treasurer

Linn & Leslie Schultz

It doesn't seem possible, but nearly two months have already gone from the new year. We have been busy processing your 2005 dues, and we want to thank you for your prompt payment. A special thanks to those who included a Christmas greeting along with their check. It does make opening all of the envelopes a real treat!

For those of you who haven't paid your 2005 dues yet, please remember to send your check by the end of February. Otherwise, your name won't appear in the 2005 RSP membership roster.

We have received many changes of address, but please remember to send your new telephone number also. In addition, if you have changed your email address (or now have an email address) please include that information. The 2005 RSP membership roster will only be as accurate as the information that you provide.

You may send any changes to:

Leslie Schultz  
P.O. Box 185  
Lost Nation, IA 52254

or you may email [lschultz@netins.net](mailto:lschultz@netins.net)  
Thanks!

Linn & Leslie Schultz  
Secretary & Treasurer

## Newsletter Policy

*This newsletter is the voice of the members of the International Association of R.S. Prussia, Inc. We welcome articles from members. We ask that articles be constructive and contribute positively to the welfare of the club and its members. The newsletter is printed four times a year. Publication mail dates are February 15, April 15, June 15, and October 15. Articles submitted for publication are due to the editor by the 15th of the month prior to publication and are subject to editing. (For example, items for the April issue would be due by March 15th) We look forward to hearing from you!*



## From Your Editor

Linda Titus

Dear Friends,

I hope this newsletter finds you and your family in good health and good spirit for this 2005 year. It is also my hope that you are thinking and planning for the Kansas City Convention.

I would like to thank all of those people who contributed to this newsletter and thanks to Jason Woody for providing the results for the RSP Auction held last October. These reports are so important to those of us unable to attend. I encourage other auctioneers to provide me with reports of their sales.

Last Convention the board decided to create a membership committee to work on ideas to entice new members to our club. President George Kandel appointed me as Chair and provided me with a list of people who stated they wanted to be a part of this committee. I personally wrote to these people and asked that they submit their ideas to me. We were to work on the ideas to create a plan, and present them to the board so a budget could be developed to implement the ideas. I sent a total of seven letters and only one person responded to my letter. Am I to assume that the interest and enthusiasm waned as the time passed between Convention and my correspondence? Whatever the reason, I am now finding

myself apologizing to the membership for no progress in this area. Members who did not volunteer for the Committee have submitted some ideas which I believe might help. My next move is to enlist the help of these people and move on.

In order to insure the future of the Club and the investment we have made in our collections, we most certainly have to keep the interest in the club and in RS Prussia alive and well. I have seen the world of antiques and collectibles go through peaks and valleys in the past, and hopefully this valley of recent years will start on an uphill climb again. But without younger people acquiring interest, there is little hope in reaching that peak. Let's all get involved in this process and get more people interested in RSP. You can start with your own families. It is good to see some of the children of the club growing up and still having interest in RSP. I hope they can help in the membership recruitment process.

Next issue will contain the roster which requires a little work from you. If you have changed your address, phone, or email please let Leslie Schultz know ASAP. We will start the work on the roster in March.

Thanks and Until Next Time,

God Bless,  
Linda Titus



## Do It Yourself Auction

For the first time, over \$4,000.00 was raised at the "Do-It-Yourself Auction" at the 2004 Convention. The 11-year total now exceeds \$29,000.00 donated to our club by our generous members. Special thanks to Joe and Wanda Faye Krick who bid over \$300.00 for a little pin dish that just happened to fall out of a plane (in flight).

Also, kudos and thanks to Miriam and Assid Corban for donating very beautiful orchids all the way from New Zealand for the 2<sup>nd</sup> year, and to Jack Williams and C.L. Riley who have donated and auctioned RSP

pieces for all 11 auctions and raised over \$2,000.00 each. Great guys and the committee hopes they keep it up.

Howard D. Greenburg

### Committee:

Terry and Francis Coy  
Mary Lou Bougher  
Harold Dobbs, Jr.  
Ben Thompson  
Selma Greenberg



# Letter to the editor

Dear Editor,

I'm Joyce Steinbuch, President of Enchanted Frog Antiques in Lathrop, Missouri, about 40 miles north of Kansas City. I was wondering if some of the members might be interested in a short trip during the convention days in July. Several shops north of Kansas City are worth seeing for those who enjoy fine china and glass, etc. Our shop would take about an hour in travel time one way. We have 11,000 sq. ft. here. Then 45 minutes would take you to two other nice shops, I'd say 10,000 and about 4,000 sq ft, then another 15 minutes would yield yet another fine shop.

I'd like to hear what might be of interest and on what days.

Perhaps the day before the convention or two different 1/2 days would work. I'm sure we could put something together for free transportation if we knew about how many would be interested.

I joined the club last year but couldn't make the convention, so I'll need some guidance in when during the schedule, etc. or whether this would be of interest at all.

Please let me know,  
Joyce  
frog lady@grm.net

## Hurricane Jeanne



*Our street in Stuart, Florida, the day after Hurricane Jeanne, September 26, 2004. Fortunately, this flooding lasted only 24 hours, but we were without power for 3 days. It was HOT, HOT, HOT!*

*Dorothy & Margo.*

## WANTED:



A man came in my room at the Indianapolis Convention. I should have got his name and phone number, but I didn't. He said he was pretty sure he had one of these cream and sugar sets which I have been looking for years to find. I gave him my name and phone number and he said he didn't have a computer, so he couldn't send me a picture of the set he had, but he would mail the picture to me. I thought maybe if he could see this article in the newsletter, he could contact me in case he lost my information. Here is my picture and thanks!

Ms. Barbara Coultas  
407 W. Olive Street  
Pana, IL 62557  
bcoultas@consolidated.net





# What Makes the R.S. Prussia Club Great?

by: *Richard Habenicht*

I have always loved the search of collecting antiques. One day about fifteen years ago, I was at a local auction that had four porcelain bowls with a mark that I had never seen before. The auctioneer called them R.S. Prussia.

Once I held my first piece of R.S. Prussia, I was in love. I bought all four of the floral bowls. A short time later on March 23, 1991, I attended my first John Woody Auction in Mt. Vernon, Illinois. I had never seen such beautiful porcelain in one room. It was here that I bought my first important piece of R.S. Prussia. The piece was a Ribbon and Jewel mold Melon Eaters bowl.

How little did I know how many times I would attend one of John's auctions. Thank you John and your family for all the joy you have brought into our hearts.

Later that year, I became a R.S. Prussia member and attended my first convention in Davenport, Iowa. This was to be the beginning of something so wonderful and beautiful that will never end. It was the start of why the R.S. Prussia Club is so strong and great today. To me the club is far greater than purchasing a new piece of R.S. Prussia. Although it is a strong second.

The most important things that the club has to offer are the members. The friends that we have made and will continue to make, encompass the true meaning of the beauty for which the club stands.

I would like to acknowledge a few members that to me exemplify the true meaning and spirit of the club.

Terry and Frances Coy hold a very special place in my heart. They are the people who made my first convention in Davenport, Iowa memorable.

When my family and I arrived, we were strangers in a new land, but Terry and Frances made us feel very welcome and a part of the R.S. Prussia family. I am sure they are a major reason why I am still a member of the club today. They are certainly great examples all club members should follow when meeting a new member at a convention. We should always do our best to extend a very friendly welcome to new members and try to spend time with them.

I would like to welcome three new members I signed up at the last Woody Auction: Fay and Marsha Waterbury; Brian Kanealy; and Dale Miller. Please remember that for the club to stay strong and grow, all members have a responsibility to make an effort to enroll new members in the club.

Over the years as a member of the club, I have met so many nice and caring people. I am sure that every member has great memories of other members who hold a special joy in their hearts. I would like to encourage these

members to write and share stories of their memories.

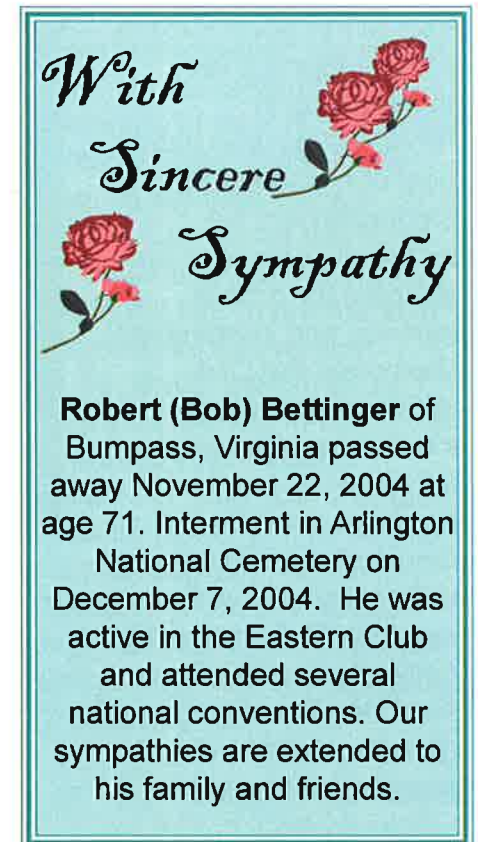
An important "ALERT" to all

members to fraudulent "second chance offers" on an eBay auction. In the past few months, on two occasions, I have been offered a second chance to buy an item that I was **NOT** high buyer on. When the offers were

received, I contacted the original high bidders to see if they

had completed the transaction to purchase the item. On both times, the high bidder stated they already had received the item or had send the payment. If you receive an offer that you think maybe dishonest, please contact eBay and notify other members through our newsletter. If you have any questions, please feel free to call me at (815) 838-2456.

**Terry and Frances Coy hold a very special place in my heart.**



*With  
Sincere  
Sympathy*

**Robert (Bob) Bettinger** of Bumpass, Virginia passed away November 22, 2004 at age 71. Interment in Arlington National Cemetery on December 7, 2004. He was active in the Eastern Club and attended several national conventions. Our sympathies are extended to his family and friends.

*I would like to welcome three new members who I signed up at the last Woody Auction:*  
**Fay & Marsha Waterbury,  
Brian Kanealy and Dale Miller.**

# Victorian Gowns

by Warren Parker

Our 2004 Convention is now history, but we are left with many good memories and the promise that next year we will meet again to enjoy another time together. Looking back over our last six conventions, we remember that one of our group, Dorothy Parker, has tried to add a little more nostalgia from the era of the beautiful R.S. Prussia porcelain art form. She has graced our banquet evening each year with her reproductions of the ladies' unique and gorgeous dress fashions that prevailed around the middle to late 1800's. Indeed this was the great Victorian influence during the period that brought us the competitive beauty in buildings, furniture, household decor, and social graces. Dorothy thought that showing some of the lavish and outstanding detail of the many gowns worn by ladies at the same time our beautiful china was in vogue, it would add to the enjoyment of our collecting and historical preservation craze. Each year she has spent many hours producing a new and very different reproduction for our pleasure.

Dorothy is a great seamstress with many years of experience and possesses a true love for her detail and design. Also, to her good fortune, she has found a very talented lady in Pennsylvania who makes most of her hats and bags to complement the costumes. She says the rest calls for a lot of patience and imagination! She hopes the Club enjoys her creations and is quite rewarded by the enthusiasm many members show by the speculation of "what color and design will next year's beauty be?" Dorothy says "Only she and the Bush Bean Dog know and we all know Duke isn't telling!" Wait until next year!





# The eBay Reporter

by Linn Schultz

Have you noticed? There have been some really nice RS Prussia pieces on eBay lately at different price levels. Just like going to the malls, little shops, or auctions, there have been some great buys if you know where to look. Many of these great buys are pieces hidden on eBay because the seller didn't describe the item correctly.

The good news is that those who do their antique hunting well are often rewarded with great buys. This is as it should be. Also, those folks in flyover country now have access to Prussia they never would have known existed, let alone had an opportunity to buy.

The bad news is it's a "buyer beware environment" on eBay. Specifically, I'm talking about those few folks who describe their repos as antique, definitely genuine, confirmed by an antique dealer, or having been in Grandma's attic for 60 years and so on. When misrepresentations occur, eBay appears quite comfortable with "Seller assumes all responsibility for listing this item" and restricting access between bidders and sellers.

Thus, the **eBay Reporter** to honor those who uniquely described their treasured RS Prussia items. We offer no opinions, just the facts, and let you decide. Here is our choice for most creative listing for January 2005

Mint R.S. Prussia Hot Chocolate Set Complete.

**eBay Item** 3776846642.

**Seller:** irishlord99

**Listed:** January 17, 2005, for 7 days, Starting price \$300.00 5 bids Sold for \$408.00

**Description:** "This is a beautiful R. S. Prussia set that will make a fine addition to any collection or prove to be an excellent piece on its own.... My father bought it on the east coast and brought it back to me a long time ago. ... This set is definitely (sp) genuine. Every piece has the R. S. Prussia stamp on the bottom and the entire set was taken to an antique dealer who confirmed that it is a genuine R. S. Prussia set."

You are encouraged to submit your recommendation for seller creativity to [lschultz@netins.net](mailto:lschultz@netins.net) for the next eBay Report.



## The RSP Heartland Website has a New Feature

by Leslie Schultz

If you haven't visited the Heartland R.S. Prussia Collectors' Club website yet, you might want to check it out at [www.rsprussiaheartland.org](http://www.rsprussiaheartland.org). The site now features a new educational "Repros & Fakes" page showing pictures of some of the more common reproductions of R.S. Prussia porcelain.

The Heartland Club launched their website last year. Even though the club has an excellent newsletter, the members felt that the club needed more exposure. Thus, the website was created. The "Calendar & Guestbook" page is changed monthly to include pictures taken during the club's biannual meetings. Pictures from the club's visit to General Crook's house at Fort Omaha were featured after the November meeting along with pictures of Heartland members and some of their R.S. Prussia porcelain. The 2005 March meeting will take place in Kansas City where members will be touring the hotel which will be the site of our summer International Convention.

So, if you want to see what's happening in the Heartland R.S. Prussia Collectors' Club, just visit the website. Better yet, fill out the membership application included on the site and join the Heartland Club where we always have a great time (and good food!)

Leslie Schultz,  
Heartland R.S. Prussia  
Collectors' Club

*Below is a proposed code of ethics presented by Allen Marcus. The membership is asked to respond with comments. Please respond your comments for tabulations to George Kandle.*



# International Association of R.S. Prussia Collectors, Inc.

## Code of Ethics

### **1. Purpose.**

The Code of Ethics provides guidelines and standards to members who sell and purchase porcelain at International Association of R. S. Prussia Collectors Club sponsored events and in other venues and marketplaces. The International Association of R. S. Prussia Collectors, Inc. is hereafter referred to as "the Club".

### **2. General Policies.**

It is recognized that policies established by auction companies and Internet venues will also be imposed upon and apply to R. S. sellers and buyers. The policies established by this Code of Ethics are intended to foster honest and fair commercial practices among Club members and would not generally conflict with other legitimate and licensed commercial business companies and establishments.

### **3. Definitions**

**a) Dealer:** Any Club member who actively engages in buying and selling of R. S. Prussia porcelain and related porcelain (e.g., R. S. Germany, R. S. Poland, E. S. Germany, Prov. Saxe, Royal Vienna, Royal Saxe, Saxe Altenburg, etc.) as a business venture and holds a sales tax number and/or business registration, if applicable, in the state in which the dealer is based.

**b) Appraiser:** Any Club member who licensed or otherwise, and who actively engages in appraising R. S. Prussia porcelain and related porcelain professionally and for a fee.

**c) Collector:** Any Club member who actively collects R. S. Prussia and related porcelain and thus on occasion, has a need to sell or put in auction unwanted or unneeded pieces of the collection. These people are not classified as dealers, since such activity is done on rare occasions.

### **4. Guidelines for Dealers:**

**a)** Items being sold should be, to the best of the dealer's knowledge and belief, be genuine articles. Any defects, damage and repairs should be disclosed. If the dealer sells fake or reproduction items, the dealer will make full disclosure in his/her sales or advertising descriptions.

**b)** Prices for merchandise for sale must be clearly shown on the item being sold.

**c)** A full description of the purchased merchandise must be written clearly on the sales receipt. This receipt must also carry the dealer's name, address, telephone number, and email address, if appropriate.





# International Association of R.S. Prussia Collectors, Inc.

## Code of Ethics

### **5. Guidelines for Appraisers:**

- a) An appraiser must have broad working knowledge of R. S. Prussia and related porcelain.
- b) The appraiser must be able to identify molds, decor, manufacturer, and approximate year/period of manufacture of the item(s) to be appraised.
- c) The appraiser must have reliable sources of information to verify the descriptions provided in the appraisal. These include catalogs, guidebooks and auction sales history.
- d) The appraiser should be an active member of a national or international society of appraisers that has a Code of Ethics and Professional Conduct. If the appraiser is not a member of the above, the appraiser must provide the person requesting the appraisal a fee schedule prior to making the appraisal. Once approved, the final appraisal must include a complete listing with description and value of the items appraised. A cover letter with appraiser's name, address, telephone number, e-mail address, and date must accompany the appraisal stating no personal interest in the items being appraised.

### **6. Guidelines for Collectors:**

- a) Collectors should ask all questions and receive clearly stated answers from the seller prior to completion of the sale.
- b) To the extent possible, ask for and receive a Certificate of Authenticity and a sales receipt with full description of the item purchased, the dealer's name, address, telephone number, and e-mail address. Collectors should recognize that R. S. Prussia and related porcelain are antiques (i.e., approximately 100 years and older), and original source documents, such as catalogue advertisements, that substantiate authenticity are rare. Therefore, the Collector's knowledge and experience are best safeguards against misunderstandings, misinformation and misrepresentations.
- c) Do not remove tags or labels until you are positive you are keeping the item. If an item is to be returned by mail, wrap the item properly to prevent damage in shipment and insure for the purchase price. Communicate with the seller prior to return. Enclose a statement declaring the reason for return.
- d) Adhere to the dealer's return policy.

### **7. Guidelines for Internet Commerce:**

- a) Club members selling R. S. Prussia and related porcelain on the Internet should identify themselves as members of the International Association of R. S. Prussia Collectors, Inc. They should include the words, "We subscribe to the International Association of R. S. Prussia Collectors, Inc. Code of Ethics."
- b) Members who conduct business on auctions, either buying or selling, should be aware that the Club has no formal rules regarding this activity. Members should understand that it is intended that both common sense and integrity among buyers and sellers be utilized in conducting their business and thus adhere to the Club's Code of Ethics.
- c) All R. S. Prussia Club members who deal with other R. S. Prussia Club members over the Internet auctions are encouraged to abide by the Club Code of Ethics.

### **8. Revisions to the CODE OF ETHICS:**

This Code of Ethics may be revised by authorized actions of the Club's Executive Board of Directors.

Saturday, October 2<sup>nd</sup>, 2004 – 9:30 a.m.  
Sheraton Four Points Hotel • St. Louis, Missouri

**Price List:**

- 1 **400** 9" MOLD 341 PLATE - SWAN & GAZEBO SCENIC DECOR
- 2 **500** 13 3/4" RSP MOLD 341 CELERY TRAY - SWAN & GAZEBO SCENIC DECOR
- 3 **200** 10 3/4" RSP CARNATION MOLD TWO HANDLED CAKE PLATE - PINK & YELLOW W/ PINK POPPY DECOR - sm pro repair
- 4 **25** 9 3/4" RSP POINT & CLOVER MOLD TWO HANDLED CAKE PLATE - WHITE & LIGHT GREEN W/ PINK ROSE DECOR - fading
- 5 **250** 10 3/4" RSP CARNATION MOLD TWO HANDLED CAKE PLATE - WHITE & DARK GREEN W/ MAGNOLIA FLORAL DECOR
- 6 **300** 11 1/2" RSP MOLD 300 TWO HANDLED CAKE PLATE - LAVENDER TIFFANY BACKGROUND W/ WHITE & PINK ROSE DECOR SET IN WHITE URN - SATIN FINISH
- 7 **100** 11 1/2" RSP TWO HANDLED CAKE PLATE - YELLOW & GREEN W/ SNOWBALL & ROSE DECOR
- 8 **100** 12" RSP TWO HANDLED CAKE PLATE - GREEN TONES W/ PINK ROSE DECOR - SATIN FINISH
- 9 **140** 11 3/4" RSP MOLD 151 TWO HANDLED CAKE PLATE - WHITE & GREEN W/ MISTLETOE DECOR
- 10 **15000** VERY RARE 10 3/4" RSP ADMIRAL PERRY ARCTIC EXPEDITION BOWL - SCENE OF ADMIRAL PERRY AND MATE STANDING NEAR IGLOO W/ AMERICAN FLAG - "MIDST SNOW AND ICE"
- 11 **120** 11 1/2" RSP MOLD 278 TWO HANDLED CAKE PLATE - GREEN W/ PINK & YELLOW ROSE DECOR
- 12 **125** 11" RSP MOLD 259 TWO HANDLED CAKE PLATE - WHITE, LAVENDER & ORANGE W/ PINK & YELLOW ROSE DECOR - LUSTRE FINISH
- 13 **170** 11" RSP PLUME MOLD TWO HANDLED CAKE PLATE - YELLOW & LAVENDER COLORS W/ HANGING BASKET DECOR!
- 14 **80** 11 1/2" RSP MOLD 107 TWO HANDLED CAKE PLATE - WHITE & PINK W/ PINK ROSE DECOR
- 15 **450** 6" RSP MOLD 901 TWO HANDLED JEWELLED VASE - IRIDESCENT GREEN BORDER W/ PEACOCK & PHEASANT SCENIC BAND - GREAT GOLD!
- 16 **70** 3 3/4" WHELOCK PRUSSIA CREAMER - WHITE W/ PEACOCK DECOR - SATIN FINISH
- 17 **70** 4" RSP MEDALLION MOLD CREAMER - PHEASANT & EVERGREEN DECOR
- 18 **10** 5" RSP MOLD 205 BOWL - GREEN TONES, SNOWBIRD SCENIC DECOR
- 19 **120** 3 1/2" UNMARKED PRUSSIA MOLD 508 MUSTARD POT - WHITE & GREEN W/ OLD MAN IN THE MOUNTAIN SCENIC DECOR
- 20 **15500** 6 1/2" RSP ADMIRAL PERRY ARCTIC EXPEDITION CIDER PITCHER - POLAR BEAR, DOGS & TENT SCENE - "MIDST SNOW AND ICE" - VERY RARE!
- 21 **200** 10 1/4" RSP POINT & CLOVER MOLD BOWL - WHITE & LAVENDER TIFFANY HIGHLIGHTS - PINK & YELLOW ROSE DECOR - SATIN FINISH!
- 22 **250** 10 1/4" RSP MOLD 109 BOWL - YELLOW, PINK & GREEN HIGHLIGHTS W/ PINK ROSE DECOR - SATIN FINISH

- 23 **250** 10 3/4" RSP MOLD 106 BOWL - CREAM CENTER W/ BLUE BORDER HIGHLIGHTS - PINK FLORAL DECOR - SATIN FINISH
- 24 **275** 10 1/2" RSP ACORN MOLD BOWL - CREAM CENTER W/ YELLOW & PINK ROSE DECOR - BEAUTIFUL GOLD STENCIL BORDER HIGHLIGHTS - SATIN FINISH
- 25 **160** 9 1/2" RSP SUNFLOWER MOLD BOWL - LIGHT GREEN W/ PINK & WHITE FLORAL DECOR - SATIN FINISH
- 26 **125** 9 1/2" RSP SUNFLOWER MOLD BOWL - PINK & WHITE FLORAL DECOR - WHITE SATIN FINISH
- 27 **75** 9 1/2" RSP SUNFLOWER MOLD BOWL - CREAM CENTER W/ PINK & YELLOW ROSE DECOR - IRIDESCENT TIFFANY BORDER - 2" hairline
- 28 **140** 9 1/2" RSP SUNFLOWER MOLD BOWL - YELLOW BACKGROUND W/ WHITE & YELLOW POPPY DECOR
- 29 **275** 10 1/2" RSP IRIS MOLD BOWL - WHITE, GREEN & LAVENDER W/ PINK & YELLOW POPPY DECOR - SATIN FINISH!
- 30 **7500** 9 3/4" RSP TWO HANDLED ADMIRAL PERRY ARCTIC EXPEDITION RELISH TRAY - SCENE OF MAN ON SKIES, POLAR BEAR & DOGS - VERY RARE!
- 31 **350** 10 1/2" RSP IRIS MOLD BOWL - WHITE & LAVENDER W/ PINK & YELLOW POPPY DECOR - SATIN FINISH!
- 32 **250** 10 1/2" RSP IRIS MOLD BOWL - WHITE & PINK W/ SCATTERED PINK POPPY DECOR - SATIN FINISH!
- 33 **180** 10 1/2" RSP IRIS MOLD BOWL - GREEN, YELLOW, PINK & WHITE W/ PINK ROSE DECOR
- 34 **220** 10 1/2" RSP LEAF MOLD BOWL - WHITE, YELLOW & PINK TIFFANY COLORS W/ PINK & YELLOW ROSE DECOR - SATIN FINISH
- 35 **225** 10 1/2" UNMARKED LEAF MOLD BOWL - GREEN & WHITE W/ EASTER LILY FLORAL DECOR - SATIN FINISH
- 36 **175** 10 1/4" RSP LEAF MOLD BOWL - WHITE W/ IRIDESCENT BRONZE BORDER & HIGHLIGHTS - PINK & YELLOW ROSE DECOR - SATIN FINISH
- 37 **250** 10 1/2" RSP LILY OF THE VALLE LEAF MOLD BOWL - GREEN W/ TIFFANY HIGHLIGHTS - SATIN FINISH!
- 38 **125** 10 1/2" RSP SHELL MOLD BOWL - LIGHT GREEN W/ PINK ROSE DECOR - SATIN FINISH
- 39 **130** 11" RSP MOLD 211a TWO HANDLED CAKE PLATE - PINK & WHITE W/ PINK POPPY DECOR - SATIN FINISH!
- 40 **4750** 13" RSP MOLD 584 TANKARD - THREE SCENES OF DUCKS, SWALLOWS & SWANS - NICE CONDITION!
- 41 **135** 11" RSP LEAF MOLD PLATE - WHITE W/ TIFFANY HIGHLIGHTS - PINK & YELLOW ROSE DECOR - SATIN FINISH
- 42 **175** 9 1/4" RSP POINT & CLOVER MOLD BOWL - CREAM CENTER W/ SCATTERED SNOWBALL & ROSE DECOR - GOLD BORDER W/ RED HIGHLIGHTS - SATIN FINISH
- 43 **400** 10 1/4" RSP MOLD 90 BOWL - TAN CENTER W/ PINK ROSE DECOR - HEAVY GOLD BORDER!
- 44 **175** 10 1/2" RSP MOLD 211a BOWL - WHITE SATIN FINISH W/ LIGHT BLUE CENTER - GOLD STENCIL FLORAL DECOR

- 45 **450** 10 1/2" RSP BOWL-N-BOWL MOLD 17 - LIGHT BLUE W/ CREAM BORDER - PINK & WHITE FLORAL DECOR - STENCIL BORDER HIGHLIGHTS - SATIN FINISH
- 46 **400** 10 1/4" RSP STYLIZED MEDALLION MOLD BOWL - CREAM W/ PINK ROSE DECOR - THE FINEST TIFFANY HIGHLIGHTS - SATIN FINISH!
- 47 **150** 10" RSP CARNATION MOLD TWO HANDLED CAKE PLATE - PINK & YELLOW W/ POPPY DECOR -
- 48 **120** 9 1/2" RSP CARNATION MOLD TWO HANDLED CAKE PLATE - CREAM & BLUE W/ PINK & WHITE ROSE DECOR
- 49 **500** 10 3/4" RSP BOW TIE MOLD PLATE - GREEN TONES W/ PINK ROSE DECOR - SATIN FINISH - NICE!
- 50 **5000** RARE SET! 10 1/2" RSP ICICLE MOLD CHOCOLATE POT W/ (6) MATCHING CUPS & SAUCERS - (3) CUPS W/ TURKEY DECOR, (3) CUPS W/ PHEASANT DECOR, (6) PLATES W/ DUCK DECOR - QUALITY!
- 51 **200** 10 3/4" RSP CARNATION MOLD TWO HANDLED CAKE PLATE - CREAM & GREEN W/ PINK & YELLOW ROSE DECOR
- 52 **305** 10 3/4" RSP SUNFLOWER MOLD BOWL - YELLOW, GREEN & LAVENDER W/ PINK ROSE DECOR - SATIN FINISH!
- 53 **400** 10 3/4" RSP UNUSUAL MOLD BOWL - CREAM, GREEN & PINK W/ PINK ROSE DECOR - NICE!
- 54 **350** 10 1/2" RSP MOLD 252 BOWL - CREAM CENTER W/ YELLOW FLORAL DECOR - UNIQUE PINK BORDER W/ WHITE EASTER LILY HIGHLIGHTS - SATIN FINISH!
- 55 **225** 10 3/4" RSP RIBBON & JEWEL MOLD BOWL - WHITE & BLUE W/ ROSE & DAISY DECOR - SATIN FINISH, OPAL JEWELS!
- 56 **300** 11 3/4" RSP CARNATION MOLD BOWL - WHITE, LIGHT ORANGE & LAVENDER W/ PINK POPPY DECOR - SATIN FINISH!
- 57 **450** 11 3/4" RSP CARNATION MOLD BOWL - CREAM & GREEN W/ PINK ROSE DECOR
- 58 **475** 11 3/4" RSP CARNATION MOLD BOWL - WHITE, PEACH & LAVENDER W/ PINK ROSE DECOR - GREAT SATIN FINISH!
- 59 **850** 11 1/2" RSP TWO HANDLED CORSET SHAPED VASE - DOUBLE SCENE: OLD MAN IN THE MOUNTAIN & SWAN DECOR!
- 60 **4400** 10 3/4" RSP MOLD 53 BOWL - BARNYARD ANIMALS & PHEASANT DECOR IN CENTER W/ HEAVY GOLD BORDER HIGHLIGHTING PHEASANT, DUCK RUNNER & EVERGREEN DECOR - SATIN FINISH W/ GOLD STENCIL HIGHLIGHTS
- 61 **200** 9 1/2" RSP MOLD 304 RELISH TRAY - SNOWBIRD SCENIC DECOR!
- 62 **250** 5" RSP COVERED POWDER BOX - OLD MAN IN THE MOUNTAIN SCENIC DECOR!
- 63 **850** 11" RSP ICICLE MOLD TWO HANDLED CAKE PLATE - PEACOCK SCENIC DECOR!
- 64 **200** RSP OVAL SHAPED CREAMER & SUGAR - LIGHT BLUE W/ OLD MAN IN THE MOUNTAIN SCENIC DECOR!





65 **3100** 8 3/4" RSP MOLD ???  
KEYHOLE "CHARMERS" PLATE - CHARMER  
IN BLUE DRESS W/ PINK ROSE BORDER -  
SATIN FINISH

66 **2500** 8 3/4" RSP MOLD ???  
KEYHOLE "CHARMERS" PLATE - CHARMER  
IN YELLOW DRESS HOLDING APPLE BASKET  
- SATIN FINISH W/ PINK ROSE BORDER

67 **800** 8 1/2" RSP PLATE -  
"CHARMER" IN BLUE DRESS SCENIC DECOR!  
SATIN FINISH

68 **1700** 8 1/2" RSP PLATE -  
"CHARMER" IN YELLOW DRESS HOLDING  
APPLE BASKET DECOR! - SATIN FINISH

69 **700** 10 1/4" RSP ICICLE MOLD TWO HANDED  
CAKE PLATE - DOUBLE SCENE: DUCKS & TURKEY DECOR!

70 **2500** 13" RSP MOLD 304 PIERCED HANDED  
BREAD BOWL - FLAWLESS GOLD BORDER W/ BARNYARD  
ANIMALS, PHEASANT, EVERGREENS & PEACOCK DECOR - NICE!

71 **250** 10 3/4" RSP MOLD 334 BOWL - WHITE &  
GREEN W/ PHEASANT & EVERGREEN SCENIC DECOR

72 **350** 10" RSP MEDALLION MOLD TWO HANDED  
CAKE PLATE - TURKEY IN FIELD SCENIC DECOR

73 **1400** 10 1/2" RSP IRIS MOLD BOWL - WHITE &  
LAVENDER W/ WINTER SEASON PORTRAIT! - SATIN FINISH!

74 **2500** 11 1/4" RSP IRIS MOLD DRESSER TRAY -  
WHITE & LAVENDER W/ WINTER SEASON PORTRAIT! - SATIN  
FINISH!

75 **700** 10 1/2" RSP IRIS MOLD TWO HANDED  
CAKE PLATE - WHITE, GREEN & LAVENDER W/ WINTER SEASON  
PORTRAIT! - SATIN FINISH!

76 **2000** 9 3/4" RSP IRIS MOLD BOWL - WHITE &  
LAVENDER W/ SUMMER SEASON PORTRAIT! - SATIN FINISH!

77 **700** 9 3/4" RSP IRIS MOLD TWO HANDED CAKE  
PLATE - WHITE, GREEN & LAVENDER W/ SUMMER SEASON  
PORTRAIT! - SATIN FINISH!

78 **1250** 10 1/2" RSP MOLD 85 BOWL - LAVENDER  
& WHITE W/ SUMMER SEASON PORTRAIT - SATIN FINISH -  
GREAT BOWL!

79 **400** 10 3/4" RSP SHELL MOLD BOWL - WHITE,  
BRONZE & GREEN COLORS W/ WHITE EASTER LILY DECOR -  
SATIN FINISH - PRETTY!

80 **1900** 10" RSP MOLD 182 TWO HANDED CAKE  
PLATE - BROWN TONES, HUMMINGBIRD SCENIC DECOR - sm  
hairline at one handle

81 **2000** 10 1/2" RSP IRIS MOLD BOWL - WHITE,  
ORANGE & LAVENDER W/ FALL SEASON PORTRAIT! - SATIN  
FINISH!

82 **3050** 11 1/4" RSP IRIS MOLD DRESSER TRAY -  
WHITE, ORANGE & LAVENDER W/ FALL SEASON PORTRAIT! -  
SATIN FINISH!

83 **850** 9 1/2" RSP IRIS MOLD TWO HANDED CAKE  
PLATE - ORANGE & LAVENDER W/ FALL SEASON PORTRAIT! -  
SATIN FINISH!

84 **1900** 10 3/4" RSP MOLD 91 BOWL - LEBRUM  
CENTER PORTRAIT W/ (6) MEDALLION SCENES HAVE: LADY  
FEEDING CHICKS; LADY SITTING WITH DOG; LADY WITH  
WATERING CAN; LADY WITH FAN - VERY PRETTY!

85 **800** 10 1/2" UNMARKED  
PRUSSIA MOLD 86 BOWL - LADY WITH  
WATERING CAN CENTER SCENE W/ HEAVY  
GOLD & FLORAL BORDER - NICE!

86 **650** 11" RSP IRIS MOLD  
TWO HANDED CAKE PLATE - WHITE &  
LAVENDER W/ SPRING SEASON PORTRAIT! -  
SATIN FINISH!

87 **1550** 11 1/4" RSP IRIS MOLD  
DRESSER TRAY - YELLOW, GREEN &  
LAVENDER W/ SPRING SEASON PORTRAIT! -  
SATIN FINISH!

88 **1000** 10" RSP IRIS MOLD  
BOWL - LIGHT GREEN TONES W/ SPRING  
SEASON PORTRAIT!

89 **375** 11" RSP POPPY MOLD  
BOWL - WHITE W/ GOLD & IRIDESCENT  
BRONZE BORDER - PINK FLORAL DECOR -  
SATIN FINISH - VERY PRETTY!



90 **1300** 4" RSP COVERED HAIR RECEIVER - GREEN  
TONES W/ TIGER DECOR - VERY RARE!

91 **1600** 4" RSP COVERED POWDER BOX - BROWN  
TONES W/ HUMMINGBIRD SCENIC DECOR - RARE!

92 **1450** 4" RSP COVERED POWDER BOX - GREEN  
TONES W/ LION & LIONESS SCENIC DECOR - VERY RARE!

93 **1400** 9 3/4" RSP MOLD 252 RELISH TRAY -  
GREEN TONES W/ LION & LIONESS SCENIC DECOR

94 **750** 3 1/4" RSP TULIP MOLD CREAMER - BROWN  
TONES W/ OSTRICH DECOR - NICE!

95 **750** 3 1/4" RSP TULIP MOLD CREAMER - BROWN  
TONES W/ PARROT DECOR - NICE!

96 **600** 3 1/4" RSP TULIP MOLD CREAMER - BROWN  
TONES W/ HUMMINGBIRD DECOR

97 **450** 4" RSP MINIATURE VASE - BROWN TONES W/  
TROPICAL HUMMINGBIRD DECOR

98 **275** 2 3/4" WHITE GERMANY CHILD'S MUG -  
LION & LIONESS SCENIC DECOR

99 **1500** 5 1/4" RSP MOLD 182 BERRY BOWL -  
BROWN TONES W/ OSTRICH DECOR - NICE

100 **1050** 11" RSP MOLD 203 BOWL - YELLOW &  
LAVENDER COLORS W/ STAG SCENIC DECOR - SATIN FINISH!

101 **1800** 7 3/4" RSP MEDALLION MOLD PLATE -  
FLAWLESS GOLD BORDER W/ BLACK - SNOWBIRD SCENIC  
DECOR CENTER W/ MAN IN MOUNTAIN, SHEEPHERDER &  
SNOWBIRD MEDALLIONS

102 **350** 5" RS POLAND TWO HANDED VASE - GREEN  
TONES W/ PHEASANT DECOR

103 **1400** 8" RS POLAND TWO HANDED VASE -  
BROWN TONES W/ BLACK STORK SCENIC DECOR - RARE SCENE

104 **1000** PAIR 9 1/2" RS POLAND TWO HANDED  
VASES - GRAY/BROWN BACKGROUND W/ PHEASANT MOTIF

105 **800** 8 1/2" RSP MOLD 910 VASE - IRIDESCENT  
LIGHT BLUE BACKGROUND W/ BAND OF BARNYARD ANIMALS,  
PHEASANT & PEACOCK DECOR - GREAT GOLD STENCIL  
HIGHLIGHTS

106 **160** 5" RS POLAND TWO HANDED VASE - GREEN  
TONES W/ BLUE BREASTED PHEASANT DECOR - tiny rim nick

107 **500** 10 3/4" RSP SWAG & TASSEL MOLD BOWL -  
THREE SCENE: BARNYARD ANIMALS, PHEASANT & SWALLOW  
DECOR - VERY NICE!

108 **1050** 10 3/4" RSP ICICLE MOLD BOWL -  
BARNYARD ANIMALS & PHEASANT SCENIC DECOR - NICE!

109 **1400** 9" UNMARKED PRUSSIA THREE SCENE  
CHOCOLATE POT - TURKEY, SWAN & SWALLOW SCENIC DECOR

110 **900** 11" RSP FLORAL MOLD  
BOWL - SWAN & SWALLOWS SCENIC DECOR  
- NICE!

111 **700** 10 3/4" RSP MOLD 334  
BOWL - GREEN TONES W/ TURKEY &  
EVERGREEN SCENIC DECOR - VERY NICE!

112 **1400** 3 1/2" RSP SHAVING MUG  
W/ PARTITION - THREE SCENE: BARNYARD  
ANIMALS, SWAN & SWALLOW DECOR!

113 **850** 11" RSP MOLD 346 TWO  
HANDED CAKE PLATE - DOUBLE SCENE:  
SHEEPHERDER & SWALLOW DECOR!

114 **400** 10 1/2" RSP SWAG &  
TASSEL MOLD TWO HANDED CAKE PLATE -  
SHEEPHERDER SCENIC DECOR!

115 **375** 11 3/4" RSP SWAG &  
TASSEL MOLD DRESSER TRAY - SHEEPHERDER  
SCENIC DECOR!

116 **700** 11" RSP SWAG AND TASSEL MOLD BOWL -  
SHEEPHERDER SCENIC DECOR - NICE!

117 **300** 5 3/4" RSP MOLD 909 VASE - SHEEPHERDER  
SCENIC DECOR

118 **120** 8 1/4" RS GERMANY PLATE - SHEEPHERDER  
SCENIC DECOR

119 **190** 8" RSP SWAG & TASSEL MOLD RELISH TRAY -  
SHEEPHERDER SCENIC DECOR!

120 **500** RARE RSP PEDESTAL CREAMER & SUGAR -  
BLUE & CREAM - BACKGROUND W/ SHEEPHERDER SCENIC  
DECOR - MOLD 611

121 **300** 4 1/2" X 7" RSP SWAG & TASSEL MOLD  
COMPOTE - SHEEPHERDER SCENIC DECOR - COMPOTE HAS  
FACTORY TILT

122 **375** 12" RSP MOLD 304 CELERY TRAY - OLD MAN  
IN THE MOUNTAIN SCENIC DECOR

123 **400** 12" RSP SWAG & TASSEL MOLD CELERY TRAY  
- SHEEPHERDER SCENIC DECOR!

124 **375** RARE MOLD! RSP CREAMER & SUGAR -  
WHITE & ORANGE W/ SHEEPHERDER & SWALLOW SCENIC  
DECOR - SATIN FINISH!

125 **525** 7 1/2" RSP MOLD 304 PLATE - YELLOW  
BACKGROUND, SNOWBIRD SCENIC DECOR!

126 **550** 12" RSP MOLD 304 CELERY TRAY -  
SNOWBIRD SCENIC DECOR!

127 **1000** 8 1/2" RSP MOLD 92 PLATE - SNOWBIRD  
SCENIC DECOR!

128 **950** 8 1/2" RSP MOLD 92 PLATE - OLD MAN IN  
THE MOUNTAIN SCENIC DECOR!

129 **1000** 10 1/2" RSP (SUHL MOLD 3) TWO  
HANDED VASE - GREEN TONES W/ SHEEPHERDER & SWALLOW  
SCENIC DECOR - VERY NICE!

130 **1000** 11" RSP MOLD 304 TWO-HANDED CAKE  
PLATE - SNOWBIRD SCENIC DECOR - NICE!

131 **1350** 11" RSP  
UNIQUE MOLD 113 BOWL  
SNOWBIRD SCENIC DECOR -  
SATIN FINISH!

132 **350** 10"  
RSP MEDALLION MOLD  
TWO HANDED CAKE  
PLATE - OLD MAN IN  
THE MOUNTAIN SCENIC  
DECOR!

133 **750** 11"  
RSP MOLD 304 TWO  
HANDED CAKE PLATE -  
OLD MAN IN THE  
MOUNTAIN SCENIC DECOR!

134 **1000** 11"  
RSP MOLD 910 VASE -  
RARE FOUR SCENE  
BARNYARD ANIMALS,  
SWALLOW, DUCK & PHEASANT  
MOTIF

135 **900** 8 3/4" RSP MEDALLION MOLD PLATE -  
CREAM CENTER W/ PINK & WHITE FLORAL DECOR - HEAVY  
GOLD BORDER W/ SWALLOW HIGHLIGHTS - SWAN MEDALLION  
DECOR

136 **1000** 11 3/4" RSP MOLD 110 BOWL - BROWN  
TONES W/ COTTAGE SCENE DECOR - EXTRA NICE!

137 **350** 10 1/4" RSP MOLD 98 TWO HANDED CAKE  
PLATE - BROWN TONES W/ MILL SCENE DECOR!

138 **300** 10 1/4" RSP MOLD 98 TWO HANDED CAKE  
PLATE - BROWN TONES W/ CASTLE SCENE DECOR!

139 **350** 10 1/4" RSP MOLD 98 TWO HANDED CAKE  
PLATE - BROWN TONES W/ COTTAGE SCENE DECOR

140 **550** 11 3/4" RSP FLEUR DE LYS MOLD DRESSER  
TRAY - BROWN TONES W/ CASTLE SCENE DECOR - NICE!

141 **4500** (6) 5 1/4" RSP MOLD 182 BERRY DISHES -  
BROWN TONES - (5) W/ HUMMINGBIRD DECOR, (1) BIRD OF  
PARADISE DECOR

142 **150** PAIR 6" RSP MOLD 98 PLATES - BROWN  
TONES W/ COTTAGE SCENE DECOR

143 **100** 6" RSP MOLD 98 PLATE - BROWN TONES W/  
MILL SCENE DECOR

144 **180** 9 1/4" RSP MOLD 98 RELISH TRAY - BROWN  
TONES W/ COTTAGE SCENE DECOR



145 **210** 9 1/2" RSP MOLD 98 RELISH TRAY - BROWN TONES W/ MILL SCENE DECOR  
 146 **210** 4 1/4" RSP MINIATURE VASE - BROWN TONES W/ CASTLE SCENE DECOR  
 147 **225** 6 1/4" RSP MOLD 915 VASE - BROWN TONES W/ MILL SCENE DECOR  
 148 **120** 4 1/4" RSP MINIATURE VASE - BROWN TONES W/ MILL SCENE DECOR - rim touch-up  
 149 **425** 7" UNMARKED PRUSSIA MOLD 910 VASE - BROWN TONES W/ DOUBLE MILL & COTTAGE SCENES!  
 150 **300** RARE 4 1/2" RSP MOLD 726 THREE FOOTED HATPIN HOLDER - BROWN TONES W/ MILL SCENE DECOR!  
 151 **70** 3 1/2" RSP TULIP MOLD CREAMER - BROWN TONES W/ MILL SCENE DECOR  
 152 **160** 3 1/2" RSP SHAVING MUG - BROWN TONES W/ OLD FARM SCENE  
 153 **600** PRETTY! 10 1/2" RSP MOLD 94 BOWL - COTTAGE SCENE SCENIC DECOR IN CENTER W/ PINK & YELLOW ROSE DECOR - SATIN FINISH!  
 154 **600** 10 3/4" RSP MOLD 101 BOWL - GREEN TONE BACKGROUND W/ MILL SCENE DECOR - PEACH COLORED BORDER W/ GOLD HIGHLIGHTS - SATIN FINISH  
 155 **2200** RARE! 10 1/2" RSP MOLD 85 BOWL - DOUBLE IMAGE: SUMMER SEASON & MILL SCENE DECOR - VERY NICE!  
 156 **500** 10 3/4" RSP SCALLOPED MOLD BOWL - MILL SCENE DECOR SET IN CLOUD SURROUNDINGS - VERY UNUSUAL MOLD & DECOR!  
 157 **190** 8 3/4" RSP MOLD 110 PLATE - GREEN TONES W/ COTTAGE SCENE DECOR  
 158 **190** 8 3/4" RSP MOLD 110 PLATE - GREEN TONES W/ CASTLE SCENE DECOR  
 159 **190** 8 3/4" RSP MOLD 110 PLATE - GREEN TONES W/ MILL SCENE DECOR  
 160 **325** 10 1/4" UNMARKED PRUSSIA MOLD 98 BOWL - ORANGE & GREEN TONES W/ MILL SCENE DECOR!  
 161 **800** 9 3/4" RSP IRIS MOLD PLATE - YELLOW & PINK TONES W/ POPPY HIGHLIGHTS - CASTLE SCENE SCENIC DECOR IN CENTER - SATIN FINISH  
 162 **275** 13 1/2" RSP FLEUR DE LYS MOLD CELERY TRAY - GREEN TONES W/ GIRAFFE SAFARI SCENIC DECOR - THIS SCENE IS NOT ORIGINAL, BUT PROBABLY CAME FROM BOWLING GREEN, OHIO  
 163 **70** 9 1/4" RSP RELISH TRAY - WHITE & GREEN W/ DAISY BORDER - HAND PAINTED PHEASANT SCENE - NOT ORIGINAL SCENE, BUT GREAT WORK!  
 164 **400** 5 1/2" RSP BALL SHAPED VASE - GREEN TONES W/ MILL & COTTAGE SCENE DECOR - FINE COBALT BLUE TRIM!  
 165 **130** 7 3/4" RSP MOLD 932 TWO-HANDLED PEDESTAL VASE - GREEN TONES W/ CASTLE SCENE DECOR!  
 166 **475** 7" RSP JEWEL MOLD TWO HANDLED VASE - GREEN TONES W/ CASTLE SCENE DECOR!  
 167 **550** (3) PIECE RSP DOUBLE SCENE MOLD 584 TEA SET - TEA POT, CREAMER & SUGAR - COTTAGE & SWALLOW SCENIC DECOR - SATIN FINISH - sugar w/ finial repair  
 168 **350** 3 1/2" RSP SHAVING MUG - COTTAGE & SWALLOW SCENIC DECOR - VERY NICE!  
 169 **300** 9" RSP MOLD 205 PLATE - LIGHT BROWN & BLUE COLORS W/ SWAN & TERRACE DECOR!  
 170 **500** 10" RSP MOLD 584 CHOCOLATE BOWL - LIGHT GREEN/BROWN BACKGROUND COLORS - MILL SCENE DECOR  
 171 **50** 9 1/2" RSP MOLD 252 BOWL - GREEN TONES W/ MILL SCENE DECOR - backside rim chip  
 172 **50** LIMOGES GRAY & MATCHING UNDER PLATE - WHITE & ORANGE W/ PHEASANT DECOR - 9"  
 173 **275** RSP MOLD 576 CREAMER & SUGAR - GREEN TONES W/ CASTLE & MILL SCENE  
 174 **900** 10 3/4" RSP RIBBON & JEWEL MOLD BOWL - BROWN, YELLOW & ORANGE TONES W/ MASTED SCHOONER SCENIC DECOR - OPAL JEWELS!  
 175 **275** (2) 6" RSP MOLD 207 PLATES - MASTED SCHOONER SCENIC DECOR - LUSTRE FINISH  
 176 **200** RSP MOLD 632 CHOCOLATE CUP & MATCHING SAUCER - BROWN TONES W/ CASTLE SCENE DECOR

177 **350** BERRY SET - 10 1/4" RSP MOLD 311 MASTER W/ (6) MATCHING 5" BERRY DISHES - CREAM COLOR W/ TAN BORDER - PINK ROSE DECOR, SATIN FINISH  
 178 **150** 10" RSP BOWL - CREAM & LIGHT GREEN W/ PINK ROSE DECOR - SATIN FINISH - UNKNOWN MOLD  
 179 **1100** RARE COMPLETE TEA SET! RSP MOLD 533 TEA POT, CREAMER & SUGAR, (6) MATCHING CUPS & SAUCERS - WHITE W/ CREAM BORDER - PINK & WHITE ROSE DECOR, GOLD STENCIL HIGHLIGHTS, SATIN FINISH!  
 180 **1100** 10" RSP MOLD 521 CHOCOLATE POT W/ (6) MATCHING CUPS & SAUCERS - BROWN TONES W/ WHITE POPPY DECOR - FINE SET!  
 181 **125** 4" RSP COVERED HAIR RECEIVER - WHITE & LIGHT MAUVE W/ WHITE ROSE DECOR - SATIN FINISH  
 182 **140** 12 1/2" RSP MOLD 311 BUNN TRAY - WHITE & PEACH W/ PINK ROSE DECOR - SATIN FINISH  
 183 **125** 4 3/4" RSP MUFFINEER - LIGHT GREEN & BROWN BACKGROUND W/ PINK ROSE DECOR  
 184 **100** (6) 5 1/2" BERRY DISHES - CREAM COLOR W/ SOFT PINK ROSE DECOR - SATIN FINISH  
 185 **100** 11" RSP UNIQUE MOLD BOWL - CREAM & BROWN W/ WHITE POPPY DECOR - rim repair  
 186 **300** 11" RSP BOWL - WHITE & PEACH W/ PEACH COLORED ROSE DECOR - SATIN FINISH  
 187 **150** 12 1/4" RSP CELERY TRAY - CREAM COLOR W/ LIGHT PINK ROSE DECOR - NICE GOLD TRIM HIGHLIGHTS - SATIN FINISH  
 188 **575** 7" X 11" RSP CENTER HANDLED SERVING DISH - CREAM & MAUVE COLOR W/ PINK ROSE DECOR - SATIN FINISH - VERY UNIQUE!  
 189 **275** 10" RSP UNIQUE MOLD BOWL - CREAM & BROWN W/ PINK ROSE DECOR - NICE SATIN FINISH!  
 190 **110** (6) 5" RSP BERRY DISHES - WHITE & GREEN W/ PINK ROSE DECOR - SATIN FINISH  
 191 **350** 6 1/2" X 7 1/2" RSP TWO HANDLED PEDESTAL CRACKER JAR - WHITE W/ IRIDESCENT GREEN LEAF HIGHLIGHTS & PINK ROSE DECOR - SATIN FINISH  
 192 **100** 6" RSP GRAY BOAT & MATCHING UNDERPLATE - CREAM W/ PINK ROSE DECOR  
 193 **750** 11 3/4" UNMARKED PRUSSIA ICICLE MOLD DRESSER TRAY - BARNYARD ANIMALS SCENIC DECOR!  
 194 **180** 6 1/2" RSP ICICLE MOLD THREE FOOTED BOWL - PHEASANT DECOR  
 195 **1000** 10" RSP SWAG & TASSEL MOLD CHOCOLATE POT - BARNYARD ANIMALS & SWALLOW DECOR!  
 196 **475** RSP MOLD 633 CREAMER & SUGAR - WHITE & ORANGE W/ BARNYARD ANIMALS SCENIC DECOR!  
 197 **500** 8 1/2" RSP MOLD 92 PLATE - GREEN TONES W/ PEACOCK DECOR!  
 198 **140** 8 1/2" RSP MOLD 7 PLATE - GREEN TONES W/ TURKEY DECOR - this plate has been in half and pro repaired  
 199 **800** RARE! 4 3/4" RSP MINIATURE ROUND WALL PLAQUE - THREE SCENE DUCKS, SWALLOW & SWAN DECOR - FIRST WE HAVE EVER SEEN!  
 200 **290** 10 1/2" UNMARKED PRUSSIA TWO HANDLED CAKE PLATE - SWAN DECOR  
 201 **675** 10 1/2" RSP ICICLE MOLD BOWL - SWAN DECOR!  
 202 **375** 12" RSP ICICLE MOLD CELERY TRAY - SWAN DECOR!  
 203 **400** 3 1/2" RSP MOLD 584 SHAVING MUG - SWAN & EVERGREEN SCENIC DECOR  
 204 **450** 3 1/4" RSP MOLD 584 MUSTARD POT - DUCK & EVERGREEN SCENIC DECOR - SATIN FINISH  
 205 **150** RSP HATPIN HOLDER W/ ATTACHED PIN BOX - SWAN & EVERGREEN SCENIC DECOR - no lid  
 206 **170** RSP MOLD 521 CREAMER & SUGAR - SWAN, EVERGREEN & COLUMNS SCENIC DECOR - SATIN FINISH!  
 207 **750** 10" UNMARKED PRUSSIA MOLD 584 TANKARD - SWAN DECOR!  
 208 **200** 5" RSP MOLD 804 COVERED HAIR RECEIVER - SWAN & EVERGREEN SCENIC DECOR  
 209 **150** RSP MOLD 584 CUP & SAUCER - WHITE W/ SWAN & EVERGREEN SCENIC DECOR  
 210 **170** 9 1/2" RSP MOLD 304 RELISH TRAY - SWAN DECOR

211 **190** 8 1/2" RSP ICICLE MOLD PLATE - SWAN DECOR - faint hairline  
 212 **400** 4" RSP MOLD 805 COVERED HAIR RECEIVER - SWAN DECOR W/ SATIN FINISH  
 213 **225** 9 1/2" RSP MOLD 922 TWO-HANDLED VASE - WHITE W/ SWAN & EVERGREEN SCENIC DECOR  
 214 **140** 2 1/4" RSP MEDALLION MOLD TWO HANDLED TOOTHPICK HOLDER - DUCK & EVERGREEN DECOR - handles glued on  
 215 **450** 6" RSP ICICLE MOLD TEA POT - BARNYARD ANIMALS SCENIC DECOR  
 216 **350** 12" RSP ICICLE MOLD CELERY TRAY - TURKEY & DUCKS SCENIC DECOR!  
 217 **350** 12" UNMARKED PRUSSIA MOLD 252 DRESSER TRAY - SWAN & GAZEBO SCENIC DECOR!  
 218 **525** 11 3/4" RSP ICICLE MOLD DRESSER TRAY - SWAN DECOR!  
 219 **525** 11" UNMARKED PRUSSIA SWAG & TASSEL MOLD BOWL - SHEPHERD SCENIC DECOR - NICE!  
 220 **225** 9 1/2" RSP MOLD 304 TWO-HANDLED CAKE PLATE - PHEASANT & EVERGREEN SCENIC DECOR - LUSTRE FINISH  
 221 **450** 8 1/2" RSP MOLD 584 TWO-HANDLED CRACKER JAR - WHITE W/ PHEASANT, EVERGREEN & PEACOCK SCENIC DECOR!  
 222 **225** 9 1/2" RSP MOLD 304 TWO-HANDLED CAKE PLATE - PHEASANT & EVERGREEN SCENIC DECOR - LUSTRE FINISH  
 223 **2300** RARE! 8 1/2" RSP MOLD 584 TWO HANDLED CRACKER JAR - FIVE SCENES: PHEASANT, TURKEY, SWAN, SWALLOW & BARNYARD ANIMALS  
 224 **170** 10 1/4" RSP MOLD 206 BOWL - WHITE & GREEN W/ PINK FLORAL DECOR - SATIN FINISH  
 225 **675** 8 1/2" RSP MOLD 474 DEMI TASSE POT W/ (5) MATCHING CUPS & SAUCERS - LIGHT GREEN W/ PINK ROSE DECOR & GOLD HIGHLIGHTS - SATIN FINISH  
 226 **210** 11" RSP MOLD 304 BOWL - YELLOW & BLUE W/ HANGING BASKET DECOR  
 227 **825** 9" RSP MOLD 537 DEMI TASSE POT W/ (5) MATCHING CUPS & SAUCERS - WHITE & LAVENDER W/ SNOWBALL & ROSE DECOR - SATIN FINISH - NICE SET!  
 228 **160** 9 3/4" RSP ICICLE MOLD TWO HANDLED CAKE PLATE - YELLOW TONES W/ HANGING BASKET & PINK ROSE DECOR  
 229 **500** 8 1/2" RSP MOLD 474 DEMI TASSE POT W/ (5) CUPS & SAUCERS - WHITE & LAVENDER W/ LILY OF THE VALLEY DECOR - SATIN FINISH - SLIGHT DECOR DIFFERENCE BETWEEN POT & CUPS  
 230 **100** 9 1/2" RSP MOLD 56 RELISH TRAY - WHITE & LAVENDER W/ PINK ROSE DECOR  
 231 **2800** 10 3/4" RSP RIBBON & JEWEL MOLD BOWL - IRIDESCENT GREEN BORDER W/ HEAVY GOLD HIGHLIGHTS - DICE THROWERS SCENIC DECOR - OPAL JEWELS!  
 232 **450** 10 1/2" RSP MOLD 647 TANKARD - YELLOW W/ PINK ROSE DECOR - SATIN FINISH!  
 233 **1500** BERRY SET - 10 1/2" RSP POINT & CLOVER MOLD MASTER BOWL W/ (6) MATCHING BERRY DISHES -





- GREEN TONES W/ DICE THROWERS SCENIC DECOR ON MASTER - BERRY DISHES ALL HAVE MELON EATER DECOR - NICE!
- 234 **425** 9 1/2" RSP POINT & CLOVER MOLD CHOCOLATE POT - SNOWBALL & ROSE DECOR - FINE COBALT BLUE & GREEN BORDER W/ GOLD HIGHLIGHTS - no lid
- 235 **160** 10 3/4" RSP MOLD 303 BOWL - WHITE, GREEN & ORANGE W/ PINK ROSE DECOR - SATIN FINISH
- 236 **350** 5" RSP POINT & CLOVER MOLD SUGAR BOWL - ROSE & DAISY DECOR - NICE COBALT BLUE & GREEN BORDER W/ GOLD HIGHLIGHTS
- 237 **150** 10 3/4" RSP MOLD ??? BOWL - WHITE, GREEN & ORANGE W/ PINK ROSE DECOR - SATIN FINISH
- 238 **250** 5 1/2" RSP CABBAGE TYPE MOLD BERRY DISH - WHITE W/ DICE THROWERS SCENIC DECOR - GOLD BORDER
- 239 **175** 10 1/2" RSP MOLD 300 TWO HANDED CAKE PLATE - WHITE & LAVENDER W/ PINK & WHITE ROSES SET IN WHITE URN DECOR - SATIN FINISH
- 240 **150** 8 1/2" RSP MOLD 263 PLATE - WHITE & LAVENDER W/ PINK & WHITE ROSES SET IN WHITE URN DECOR - SATIN FINISH
- 241 **200** 10 3/4" RSP MOLD 300 BOWL - WHITE & LAVENDER W/ PINK & WHITE ROSES SET IN WHITE URN DECOR - SATIN FINISH
- 242 **110** 12 1/4" RSP MOLD 300 CELERY TRAY - WHITE & LAVENDER W/ PINK & WHITE ROSES SET IN WHITE URN DECOR - SATIN FINISH
- 243 **800** 10" RSP SWAG & TASSEL MOLD CHOCOLATE POT W/ (5) MATCHING CUPS & SAUCERS - WHITE W/ HANGING BASKET DECOR - GOLD STENCIL HIGHLIGHTS
- 244 **250** THREE PIECE RSP SWAG & TASSEL MOLD TEA SET - WHITE W/ HANGING BASKET DECOR - GOLD STENCIL HIGHLIGHTS - SATIN FINISH - sugar lid not original, finial repair
- 245 **375** 9 3/4" RSP MOLD 584 TANKARD - WHITE W/ HANGING BASKET DECOR - SATIN FINISH!
- 246 **175** 7 1/2" RSP MOLD 304 PLATE - SWAN & EVERGREEN SCENIC DECOR
- 247 **10** RSP SUGAR - GREEN TONES W/ MILL SCENE DECOR - wrong lid
- 248 **300** RSP ICICLE MOLD SUGAR BOWL - DUCK SCENIC DECOR
- 249 **175** 5 1/2" RSP ICICLE MOLD BERRY BOWL - TURKEY SCENIC DECOR
- 250 **290** 9 1/2" RSP ICICLE MOLD RELISH TRAY - PEACOCK SCENIC DECOR
- 251 **350** 8" RSP MOLD 304 RELISH TRAY - THREE SCENE DUCKS, SWAN & SWALLOW DECOR
- 252 **350** 7 1/2" RSP MOLD 304 PLATE - THREE SCENE: BARNYARD ANIMALS, SWAN & SWALLOW DECOR
- 253 **1500** 12 3/4" RSP IRIS MOLD BREAD BOWL - GREEN TONES W/ SUMMER SEASON PORTRAIT!
- 254 **110** 4" RSP POINT & CLOVER MOLD SYRUP PITCHER - SNOWBALL & ROSE DECOR - COBALT BLUE & GREEN BORDER W/ GOLD HIGHLIGHTS - no lid
- 255 **1700** 4 1/2" X 8 1/2" RSP IRIS MOLD CRACKER JAR - WHITE & ORANGE W/ FALL SEASON PORTRAIT - EXTRA NICE!
- 256 **600** 7 1/2" X 9" RS POLAND PEDESTAL TWO-HANDED CRACKER JAR - PINEAPPLE FINIAL - LIGHT BROWN W/ PINK ROSE DECOR - SATIN FINISH
- 257 **950** PAIR 9" RS POLAND TWO HANDED VASES - WHITE W/ GOLD BAND & PINK ROSE DECOR - SATIN FINISH
- 258 **150** (6) 5 1/2" RSP SHELL MOLD BERRY DISHES - WHITE & LAVENDER W/ WHITE POPPY DECOR - SATIN FINISH
- 259 **250** 10 1/2" RSP MOLD 202 BOWL - WHITE & LIGHT PINK W/ STYLIZED SWAN DECOR
- 260 **1000** RARE SET! 6 3/4" RS POLAND PEDESTAL TEA POT, CREAMER & SUGAR W/ (4) MATCHING CUPS & SAUCERS - PINEAPPLE FINIALS - LIGHT BROWN W/ PINK ROSE DECOR - SATIN FINISH!
- 261 **250** 10 3/4" RSP UNIQUE MOLD BOWL - WHITE W/ SWAN & EVERGREEN SCENIC DECOR - LUSTRE FINISH
- 262 **310** CAKE SET - 9 1/2" RSP TWO HANDED CAKE PLATE W/ (6) MATCHING 7 3/4" DESSERT PLATES - LIGHT GREEN W/ POPPY DECOR - SATIN FINISH
- 263 **125** 11 3/4" UNMARKED PRUSSIA DRESSER TRAY - LIGHT GREEN W/ YELLOW POPPY DECOR - SATIN FINISH
- 264 **150** 11 3/4" RSP MOLD 151 TWO HANDED CAKE PLATE - CREAM W/ WHITE POPPY DECOR - SATIN FINISH
- 265 **300** 10 3/4" RSP UNIQUE MOLD BOWL - CREAM, GREEN & TIFFANY FINISH W/ WHITE POPPY DECOR - SATIN FINISH!
- 266 **150** RSP PEDESTAL CREAMER & SUGAR - YELLOW TONES W/ WHITE FLORAL DECOR
- 267 **275** (6) RSP COFFEE CUPS & SAUCERS - LIGHT GREEN W/ WHITE POPPY DECOR - SATIN FINISH
- 268 **300** 6 1/2" RSP IRIS MOLD CRACKER JAR - WHITE & LAVENDER W/ PINK POPPY DECOR - SATIN FINISH
- 269 **325** 6" RSP TWO-HANDED CRACKER JAR - YELLOW W/ WHITE POPPY DECOR
- 270 **300** 6 1/2" RSP (MOLD SIMILAR TO 646) CRACKER JAR - YELLOW & BROWN W/ WHITE POPPY DECOR
- 271 **125** 7" RSP OVAL SHAPED CANDY DISH - LIGHT GREEN W/ WHITE POPPY DECOR
- 272 **225** RS GERMANY THREE HANDED TOOTHPICK HOLDER - LIGHT BROWN W/ WHITE ROSE DECOR
- 273 **140** RS GERMANY SIX SIDED SALT & PEPPER SHAKERS - LIGHT GREEN W/ PINK ROSE DECOR
- 274 **290** 12 1/2" RSP SWAG & TASSEL MOLD CELERY TRAY - WHITE & ORANGE COLORS W/ THREE SCENE: TURKEY, DUCK & SWALLOWS DECOR
- 275 **175** 10 1/4" RSP MOLD 3 BOWL - CREAM & LAVENDER W/ POPPY DECOR - SATIN FINISH!
- 276 **300** 7 1/2" RSP MOLD 647 MILK PITCHER - YELLOW & GREEN W/ WHITE POPPY DECOR
- 277 **80** RSP MOLD 510 CHOCOLATE CUP - LIGHT GREEN W/ WHITE POPPY DECOR - SATIN FINISH
- 278 **190** 10 1/4" RSP MOLD 313 BOWL - CREAM & GREEN W/ PINK ROSE DECOR
- 279 **175** 10" RSP MASTER BOWL W/ (6) 5 1/4" BERRY DISHES - LIGHT GREEN W/ POPPY DECOR - BERRY DISHES DO NOT MATCH MASTER - master has serious repair
- 280 **375** 6" RSP TWO HANDED CRACKER JAR - LIGHT GREEN W/ WHITE POPPY DECOR - SATIN FINISH
- 281 **75** 8 1/2" RSP PLATE - LIGHT GREEN W/ POPPY DECOR - SATIN FINISH
- 282 **450** 9" UNMARKED PRUSSIA MOLD 474 DEMI TASSE POT - LIGHT GREEN W/ POPPY DECOR - SATIN FINISH
- 283 **150** RSP CREAMER & SUGAR - LIGHT GREEN W/ POPPY DECOR - SATIN FINISH
- 284 **100** RSP SUGAR BOWL - LAVENDER & GREEN W/ POPPY DECOR - SATIN FINISH
- 285 **175** 9 1/2" RSP BOWL - LIGHT GREEN W/ POPPY DECOR - SATIN FINISH
- 286 **225** 8" RSP THREE FOOTED BOWL - CREAM & GREEN W/ WHITE POPPY DECOR - SATIN FINISH
- 287 **30** 5" RS POLAND SHELL MOLD BERRY DISH - LIGHT YELLOW & BROWN W/ WHITE POPPY DECOR - SATIN FINISH
- 288 **80** UNMARKED PRUSSIA SALT & PEPPER SHAKERS - WHITE & GREEN W/ PINK FLORAL DECOR - TEAR DROP SHAPED
- 289 **190** 10 1/4" RSP MOLD 3 BOWL - CREAM, GREEN & ORANGE W/ WHITE POPPY DECOR - SATIN FINISH
- 290 **750** 3 1/4" RSP IRIS MOLD MUSTARD JAR - SPRING SEASON PORTRAIT - SATIN FINISH!
- 291 **775** VERY UNUSUAL! 5 1/2" X 9 1/2" RSP PEDESTAL RUFFLED COMPOTE - GREEN LEAF STEM - GREEN TONES W/ PINK ROSE DECOR - MUST SEE!
- 292 **275** 10" RSP MOLD 540a CHOCOLATE POT - WHITE & BLUE W/ PINK ROSE DECOR - SATIN FINISH!
- 293 **400** RSP LEAF MOLD CREAMER & SUGAR - GREEN W/ TIFFANY HIGHLIGHTS - LILY OF THE VALLEY DECOR - SATIN FINISH
- 294 **350** UNIQUE 4" RSP THREE HANDED HATPIN HOLDER - GREEN TONES W/ DOGWOOD DECOR
- 295 **50** RSP CREAMER & SUGAR - GREEN TONES W/ UNKNOWN SWAN SCENE - LUSTRE FINISH - wrong lid
- 296 **850** RARE! RSP MOLD 638 CREAMER & SUGAR - YELLOW, LAVENDER & ORANGE W/ FALL SEASON PORTRAITS
- 297 **250** 5 1/2" RSP FLEUR DE LYS MOLD BERRY DISH - WHITE & LAVENDER W/ SUMMER SEASON PORTRAIT - SATIN FINISH
- 298 **310** 6 1/4" RS GERMANY NUT DISH W/ (4) MATCHING INDIVIDUAL CUPS - CREAM W/ WHITE FLORAL DECOR - SATIN FINISH
- 299 **200** (6) 4" RSP OVAL SHAPED SALT DIPS - LIGHT GREEN W/ PINK FLORAL DECOR - SATIN FINISH
- 300 **675** RSP FLEUR DE LYS MOLD TEA POT & MATCHING SUGAR - WHITE & LAVENDER W/ SUMMER SEASON PORTRAIT - SATIN FINISH!
- 301 **225** 7 1/2" RSP MOLD 474 DEMI TASSE POT - LIGHT GREEN W/ PINK & WHITE FLORAL DECOR - TIFFANY FINIAL - SATIN FINISH
- 302 **600** 3 1/4" RSP IRIS MOLD MUSTARD POT - WHITE & LAVENDER W/ SUMMER SEASON PORTRAIT - SATIN FINISH!
- 303 **125** 10 1/2" RSP BOWL - GREEN TONES W/ DOGWOOD DECOR - LUSTRE FINISH
- 304 **260** 10 1/2" RSP LILY MOLD BOWL - PINK & WHITE W/ PINK POPPY DECOR - SATIN FINISH!
- 305 **150** 9 1/2" RSP IRIS MOLD PLATE - TWO TONE GREEN W/ GOLD HIGHLIGHTS - PINK POPPY DECOR
- 306 **300** 10 1/2" RSP UNIQUE MOLD BOWL - PINK & YELLOW W/ PINK ROSE DECOR
- 307 **275** 6 1/4" RSP TWO HANDED CRACKER JAR - WHITE & LAVENDER W/ TIFFANY BORDER - DOGWOOD & CHRISTMAS GARLAND DECOR
- 308 **200** 5 1/2" RSP MOLD 207 BERRY BOWL - WINTER SEASON PORTRAIT CENTER W/ BLUE & YELLOW BORDER HIGHLIGHTS
- 309 **275** 10 1/2" UNMARKED PRUSSIA MASTER BOWL W/ (4) BERRY DISHES - CREAM, PINK & BLUE W/ SPILLED BASKET DECOR - BERRY DISHES ARE DIFFERENT MOLD
- 310 **200** 4 1/4" RSP MOLD 638 CREAMER - YELLOW, BLUE & GREEN W/ SPRING SEASON PORTRAIT
- 311 **150** 4 1/2" RSP MUFFINEER - DARK GREEN TONES W/ CLASSIC COURTING SCENE - UNUSUAL!
- 312 **175** 4 1/4" RSP MOLD 638 CREAMER - WHITE W/ WINTER SEASON PORTRAIT DECOR!
- 313 **90** 9 1/4" GERMANY PIERCED BORDER BOWL - CREAM W/ COURTING SCENE CENTER - FLORAL BORDER HIGHLIGHTS
- 314 **225** 5" X 8 1/2" RSP MEDALLION MOLD TWO-HANDED CRACKER JAR - WHITE W/ SPILLED BASKET DECOR - LUSTRE FINISH
- 315 **70** 11 3/4" RSP MEDALLION MOLD DRESSER TRAY - WHITE W/ SPILLED BASKET DECOR - LUSTRE FINISH
- 316 **225** 10" RSP SCALLOPED MOLD TWO HANDED CAKE PLATE - GREEN W/ CLASSIC COURTING SCENES & MEDALLIONS
- 317 **80** 9 3/4" RSP MEDALLION MOLD RELISH TRAY - WHITE W/ SPILLED BASKET DECOR - LUSTRE FINISH
- 318 **160** 10 1/2" RSP CARNATION MOLD BOWL - CREAM, ORANGE & LAVENDER W/ PINK ROSE DECOR - SATIN FINISH - pro edge repair
- 319 **100** 10 1/4" RSP MOLD 184 BOWL - GREEN W/ SMALL FLORAL DECOR
- 320 **110** 8 1/2" RSP SCALLOPED MOLD PLATE - GREEN W/ CLASSIC COURTING SCENE & MEDALLIONS
- 321 **100** 10 1/4" RSP MOLD 252 BOWL - LIGHT BROWN W/ PINK ROSE DECOR - SATIN FINISH - pro repair
- 322 **100** 9 3/4" RSP TWO HANDED CAKE PLATE - WHITE & BROWN W/ WHITE EASTER LILY FLORAL DECOR
- 323 **475** 11 1/4" RSP UNIQUE MOLD BOWL - CREAM W/ WHITE EASTER LILY FLORAL DECOR - GREEN TIFFANY HIGHLIGHTS - PRETTY!
- 324 **225** 10 3/4" RSP UNIQUE MOLD BOWL - CREAM & GRAY W/ FRUIT DECOR - MUST SEE!
- 325 **300** 10" RSP BOWL - YELLOW & GREEN W/ FRUIT & CHAMPAIGN GLASS DECOR - NICE!
- 326 **80** 8 1/2" RSP MOLD 228 PLATE - GREEN W/ BROWN HIGHLIGHTS - POPPY DECOR, SATIN FINISH
- 327 **80** 11 1/2" RSP MOLD 278 TWO HANDED CAKE PLATE - GREEN TONES W/ PINK ROSE & GOLD GARLAND DECOR

- 328 **140** 10 3/4" RSP SCALLOPED MOLD TWO HANDED CAKE PLATE - GREEN TONES W/ WHITE FLORAL DECOR - NICE GOLD HIGHLIGHTS
- 329 **110** 9" LEAF MOLD BOWL - WHITE, GREEN & LAVENDER W/ ROSE DECOR - SATIN FINISH
- 330 **160** 13 1/2" RSP POINT & CLOVER MOLD CELERY TRAY - CREAM W/ GREEN & GOLD BORDER HIGHLIGHTS - SCATTERED FLORAL DECOR
- 331 **70** 9 1/2" RSP SCALLOPED MOLD BOWL - WHITE W/ BLOSSOM DECOR - SATIN FINISH
- 332 **150** 9" RSP PEDESTAL BOWL W/ SQUARE BASE - GREEN TONES W/ WHITE & LAVENDER FLORAL DECOR
- 333 **90** 4" X 6" RSP THREE FOOTED COVERED BOX - GREEN TONES W/ PINK ROSE DECOR - LUSTRE FINISH - NICE!
- 334 **50** 4" RSP COVERED HAIR RECEIVER - GREEN TONES W/ WHITE TULIP DECOR - LUSTRE FINISH
- 335 **80** 2 1/4" RSP IRIS MOLD TWO HANDED TOOTHPICK HOLDER - GREEN & WHITE W/ MAGNOLIA DECOR
- 336 **70** 4 1/4" RSP SUGAR BOWL - LIGHT GREEN W/ LILY OF THE VALLEY DECOR - SATIN FINISH
- 337 **150** 10 1/4" RSP MOLD 577 SIX SIDED CHOCOLATE POT - WHITE W/ SNOWBALL FLORAL DECOR - SATIN FINISH
- 338 **60** 5" RSP OVAL SHAPED PIN DISH - LIGHT GREEN W/ WHITE TULIP DECOR
- 339 **RS** GERMANY DEMI TASSE CUP & SAUCER - LIGHT BROWN W/ PEACH COLORED ROSE DECOR - hairline in cup
- 340 **30** 5 3/4" RSP PEDESTAL SUGAR BOWL - CREAM & GREEN W/ WHITE FLORAL DECOR SATIN FINISH
- 341 **30** 2 1/2" RS GERMANY MUSTARD POT - YELLOW W/ SNOWBALL FLORAL DECOR
- 342 **60** 9 1/4" RSP RELISH TRAY - CREAM & GREEN W/ PINK FLORAL DECOR
- 343 **190** 7" RSP FERNER W/ ORIGINAL INSERT - WHITE W/ CHRISTMAS GARLAND DECOR
- 344 **425** 7" RSP POINT & CLOVER MOLD CRACKER JAR - CREAMER & GREEN W/ PINK ROSE DECOR - HEAVY GOLD HIGHLIGHTS!
- 345 **140** 12" RSP IRIS MOLD CELERY TRAY COLOR W/ LARGE PINK POPPY DECOR - SATIN FINISH
- 346 **325** 3 1/2" RSP MOLD 644 SCUTTLE MUG - YELLOW & GREEN TONES W/ PINK & YELLOW ROSE DECOR
- 347 **600** THREE PIECE TEA SET - 6 1/4" RSP POINT & CLOVER MOLD TEA POT W/ MATCHING CREAMER & SUGAR - WHITE, CREAM & GREEN W/ SNOWBALL & ROSE DECOR
- 348 **350** 4" RSP CARNATION MOLD SUGAR BOWL - PEACH & LAVENDER W/ PINK ROSE DECOR - SATIN FINISH
- 349 **50** 6" RSP SPADE SHAPED TEA STRAINER - BLUE & WHITE W/ PINK ROSE DECOR
- 350 **110** RSP MUSTACHE CUP W/ MATCHING UNDERPLATE - WHITE & BLUE W/ PINK ROSE DECOR - CUTE!
- 351 **200** 5 1/2" RSP MEDALLION MOLD BERRY BOWL - CREAM CENTER W/ CLASSIC PORTRAITS IN MEDALLIONS - FLORAL DECO
- 352 **150** 3 1/4" RSP SUNFLOWER MOLD MUSTARD POT - GREEN TONES - NICE!
- 353 **275** 4 1/2" X 9" RSP MOLD 457 TWO-HANDED CRACKER JAR - LAVENDER TIFFANY FINISH W/ PINK & WHITE ROSE DECOR - rim repair
- 354 **75** 8 3/4" RSP MOLD 333 PLATE - LIGHT GREEN W/ PINK ROSE DECOR - SATIN FINISH
- 355 **80** 12 1/2" RSP OVAL DRESSER TRAY - CREAM & GREEN W/ EASTER LILY FLORAL DECOR - SATIN FINISH
- 356 **110** 4 3/4" RSP MUFFINEER - CREAM & GREEN W/ EASTER LILY FLORAL DECOR - SATIN FINISH
- 357 **70** 8 1/2" RSP PLATE - CREAM & GREEN W/ EASTER LILY FLORAL DECOR - SATIN FINISH
- 358 **100** 9 1/4" RSP CARNATION MOLD RELISH TRAY - CREAM W/ PINK BORDER - PINK & WHITE ROSE DECOR
- 359 **175** 9 1/2" RSP MOLD 207 RELISH TRAY - PINK & YELLOW W/ FLORAL DECOR
- 360 **50** 7 3/4" RSP PLATE - YELLOW & GREEN W/ IVY DECOR
- 361 **80** 7 3/4" RSP PLATE - CREAM W/ IRIDESCENT GREEN BORDER - IVY DECOR - SATIN FINISH
- 362 **80** 8 1/2" RSP MOLD 252 BOWL - CREAM W/ PINK ROSE DECOR - SATIN FINISH
- 363 **120** 10" RSP MOLD 252 BOWL - CREAM W/ PINK ROSE DECOR - SATIN FINISH
- 364 **75** 8 1/2" RSP MOLD 90 BOWL - WHITE & GREEN W/ PINK ROSE DECOR - SATIN FINISH
- 365 **750** BERRY SET - 10 3/4" UNUSUAL MOLD MASTER BOWL W/ (10) 5 1/2" BERRY DISHES - GREEN TONES, SHEEPHERD SCENE - BERRY DISHES ARE DIFFERENT MOLD
- 366 **60** 9" RSP MOLD 341 PLATE - PINK, WHITE & GREEN W/ FLORAL DECOR
- 367 **150** 8 3/4" RSP IRIS MOLD PLATE - YELLOW & LAVENDER W/ POPPY DECOR - EXTRA FINE GOLD STENCIL HIGHLIGHTS
- 368 **60** 9 3/4" RSP MOLD 333 TWO HANDED CAKE PLATE - WHITE W/ PINK FLORAL DECOR - SATIN FINISH
- 369 **90** 10 3/4" RSP MOLD 341 TWO HANDED CAKE PLATE - PINK, WHITE & GREEN W/ FLORAL DECOR
- 370 **225** 11" RSP SUNFLOWER MOLD TWO HANDED CAKE PLATE - WHITE, PINK & GREEN W/ PINK ROSE DECOR - SATIN FINISH
- 371 **125** 8 1/4" RSP SUNFLOWER MOLD PLATE - CREAM & IRIDESCENT BRONZE W/ RED ROSE DECOR
- 372 **875** 9 1/2" RSP MOLD 704 CHOCOLATE POT W/ (5) MATCHING CUPS & SAUCERS - WHITE W/ SMALL PINK ROSE DECOR, GOLD STENCIL HIGHLIGHTS - NICE SET!
- 373 **110** 12 1/2" RSP CELERY TRAY - LIGHT BROWN W/ FALL LEAF & ENAMEL BEADED BERRY DECOR - SATIN FINISH!
- 374 **175** 10 3/4" RSP MOLD 202 BOWL - WHITE W/ PINK ROSE DECOR - SATIN FINISH
- 375 **350** 11 1/2" RSP CARNATION MOLD DRESSER TRAY - LAVENDER W/ PINK & WHITE ROSE DECOR - SATIN FINISH
- 376 **90** 7" RSP ICICLE MOLD THREE FOOTED BOWL - YELLOW, GREEN & BROWN W/ FLORAL DECOR
- 377 **450** RSP POINT & CLOVER MOLD CREAMER & SUGAR - LIGHT GREEN W/ PINK & WHITE ROSE DECOR - TIFFANY BORDER W/ HEAVY GOLD & OPAL JEWELS!
- 378 **800** (7) 5 1/2" RSP POINT & CLOVER BERRY DISHES - GREEN TONES W/ (5) DICE THROWERS DECOR; (2) MELON EATER DECOR
- 379 **120** 8 1/2" RSP MOLD 91 PLATE - WHITE & BLUE W/ ROSE & DAISY DECOR
- 380 **425** BERRY SET - 10 1/2" RSP MOLD 91 MASTER W/ (6) MATCHING 5 3/4" BERRY DISHES - BLUE & CREAM W/ ROSE & DAISY DECOR
- 381 **425** 14" RSP MEDALLION MOLD CELERY TRAY - GREEN TONES W/ REFLECTING FLORAL DECOR - MEDALLION SCENES OF DIANA THE HUNTRESS AND FLORA - NICE!
- 382 **210** 11 1/2" RSP PLUME MOLD DRESSER TRAY - YELLOW & LAVENDER W/ HANGING BASKET DECOR
- 383 **140** 10 1/2" RSP MOLD 34 TWO HANDED CAKE PLATE - GREEN, TAN & BLUE W/ HANGING BASKET DECOR
- 384 **225** NICE! 10 3/4" RSP UNIQUE MOLD BOWL - LIGHT GREEN & BROWN W/ SPILLED BASKET DECOR IN CENTER & MEDALLION BORDER - PRETTY!
- 385 **60** 3 1/4" RSP MEDALLION MOLD MUSTARD POT - GREEN TONES W/ HANGING BASKET DECOR
- 386 **375** PAIR 8 1/2" RS POLAND VASES - BROWN TONES W/ LARGE WHITE ROSE DECOR
- 387 **175** 6 1/4" RS POLAND CANDLESTICK HOLDER - LIGHT GREEN W/ WHITE ROSE DECOR
- 388 **270** 9 1/2" RS POLAND TWO HANDED VASE - BROWN TONES W/ YELLOW ROSE DECOR - DARK COBALT BLUE BORDER - NICE GOLD STENCIL HIGHLIGHTS
- 389 **80** 9 3/4" RS GERMANY TWO HANDED CAKE PLATE - BROWN TONE W/ LARGE BLUE POINSETTIA DECOR - SATIN FINISH
- 390 **75** 9 3/4" RS GERMANY TWO HANDED CAKE PLATE - WHITE & GRAY W/ WHITE TULIP DECOR - SATIN FINISH
- 391 **90** 9 3/4" RS POLAND TWO HANDED CAKE PLATE - BROWN TONES W/ PINK & WHITE ROSE DECOR
- 392 **50** 8 1/4" RS GERMANY PLATE - GREEN TONES W/ WHITE FLORAL DECOR
- 393 **450** 12 1/2" RS STEEPLE MOLD BREAD BOWL - CREAM CENTER W/ COBALT BLUE BORDER - THE FINEST GOLD HIGHLIGHTS WE HAVE SEEN!
- 394 **400** 4" X 7 1/2" RS STEEPLE MOLD COVERED BUTTER DISH - BLUE & WHITE W/ FLORAL DECOR
- 395 **175** 4" X 7 1/2" RS STEEPLE MOLD COVERED BUTTERDISH - CREAM, GREEN & RED W/ FLORAL DECOR



## Prussia "In The Web"

Submitted by John Titus



10 1/2" Melon Eater Plate  
\$2175.00



5 Portrait Ewer \$255.00



10 1/2" Blue Bird bowl  
\$293.88



10 1/2" Ostrich Plate  
\$1174.00



10 Melon Eaters Bowls 6"  
\$4050.00



Hidden Image Plate  
\$525.23





Stipple Mold Tanker  
\$400.00



10 1/2" Floral Bowl  
\$510.00



8" Vase \$227.49



8 3/4" Spring Season Plate  
\$771.99



7" Mill Scene Vase \$219.16



Basket of Flowers Coffee Pot  
\$280.00



Hidden Image Plate \$425.00



9" Lion Vase \$1325.00



Pitcher \$81.00



Footed Cracker Jar \$307.00



Dresser Tray \$383.90



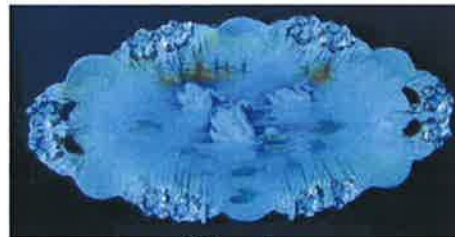
Satin Chocolate Pot  
\$326.00



Icicle Mold Chocolate  
Pot \$325.00



Swans Chocolate Pot  
\$140.27



Swan Celery \$295.00



Tooth Pick \$229.00



Spring Season Lamp  
\$750.00

Welcome  
New Members



**Charles Burton, Jr.**  
P.O. Box 27552  
Raleigh, NC 27611

**Dale Miller**  
259 Midland Drive  
Asheville, NC 28804

**Janet Bell**  
7274 Lochmoor Drive  
Ypsilanti, MI 48197

**Warren & Marcella  
Michaelis**  
2411 Jelinski Circle  
Plover, WI 54467

**John Schlegelmilch**  
2304 Carrolwood Court  
Richmond, VA 23233

**Kathy Zwerko**  
3134 Bradford Circle  
Emmaus, PA 18049

**Don & Harriet Grim**  
500 Fifth Drive  
Hoyt, KS 66440

**Miriam Miller**  
1107 Street Andrews Road  
Hollywood, FL 33021

**Chuck Stover**  
1007 W North Street  
Piqua, OH 45356

Regional Club News

**The Heartland Chapter Spring Meeting  
March 4,5 & 6 2005**

**Marriott Courtyard Hotel  
7901 N.W. Tiffany Springs Parkway  
Kansas City, Missouri**

**(Take Exit #10 off I-29, and West 1/4 Mile)**

**Make your reservations before February 17th to get  
the special Heartland Rate of \$59.95**

**PHONE: 816-891-7500**



**KENTUCKY-TENNESSEE**

**RS PRUSSIA CLUB**

**Next Meeting: Saturday April 2, 2005 at 4:30 pm (central)  
Location: Holiday Inn at University Plaza  
Bowling Green, KY**

**DIRECTIONS TO CONVENTION 2005**  
**EMBASSY SUITES KCI**

**FROM THE WEST:** I-70 EAST TO I-435 NORTH; NORTH ON I-435 TO MO HWY 152 EAST ON MO HWY 152 TO I-29 TO TIFFANY SPRINGS PKWY (EXIT 10); TURN RIGHT ON TIFFANY SPRINGS PKWY.

**FROM SOUTHWEST:** I-35 TO I-435 NORTH; NORTH ON I-435 TO MO HWY 152 EAST; EAST ON MO HWY 152 TO I-29; NORTH ON I-29 TO TIFFANY SPRINGS PKWY (EXIT 10); TURN RIGHT ON TIFFANY SPRINGS PKWY.

**FROM THE EAST:** I-70 WEST TO I-35 NORTH & I-29 (EXIT 2G); NORTH ON I-29 TO TIFFANY SPRINGS PKWY (EXIT 10); TURN RIGHT ON TIFFANY SPRINGS PKWY.

**FROM THE NORTH:** I-29 SOUTH TO TIFFANY SPRINGS PKWY (EXIT 10); TURN LEFT ON TIFFANY SPRINGS PKWY.

**FROM NORTHEAST:** I-35 SOUTH TO MO HWY 152; WEST ON MO HWY 152 TO I-29; NORTH ON I-29 TO TIFFANY SPRINGS PKWY (EXIT 10); TURN RIGHT ON TIFFANY SPRINGS PKWY.

**FROM THE SOUTH:** MO HWY 71 NORTH TO I-435 NORTH; I-435 NORTH TO MO HWY 152 WEST; WEST ON MO HWY 152 TO I-29; NORTH ON I-29 TO TIFFANY SPRINGS PKWY (EXIT 10); TURN RIGHT ON TIFFANY SPRINGS PKWY.

Attention  
Members:

If you hear of a death of any member, please let a board member or editor know as soon as possible, so we can publicize it in the newsletter.

Thank you!